

## Facade system

Using facade surfaces optimally



### Clear added value for your facade

- photovoltaic installation is hung vertically in front of the facade
- Fixing set with building authority approved dowels and stainless steel screws
- visible mounting system components are available in blank aluminum or black anodised
- mounting modules in portrait or in landscape

### Product requirements

- For solid exterior walls
- For cold facades without insulation

### Your benefits

- High-quality installation aesthetics thanks to insertion technology
- Flexible system size: From a single module to the entire facade surface
- The facade is used to generate electricity
- A construction with excellent rear ventilation which hangs in front of the building but does not touch it
- pre-assembled parts



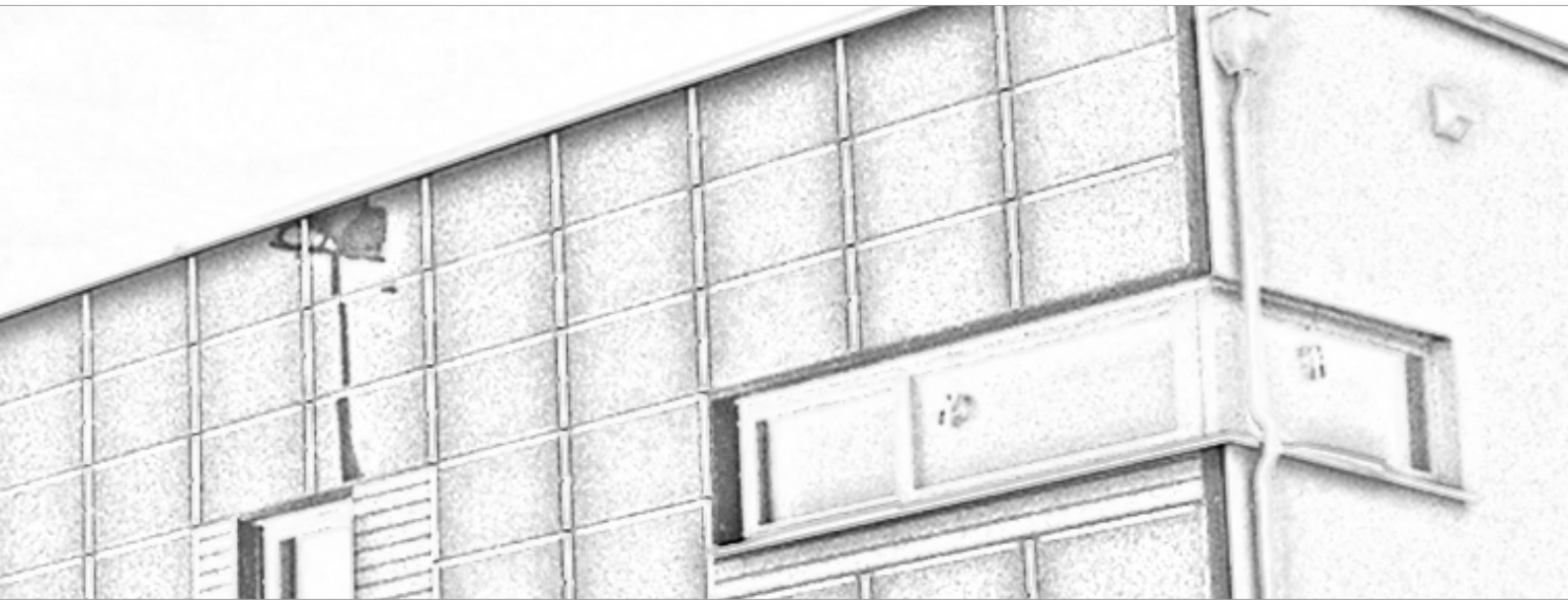
Few components - simple and fast installation



Very good rear ventilation of the modules

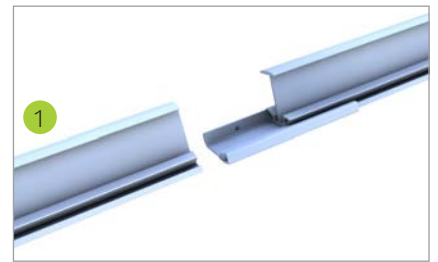


Dowels with technical approval



## Pic Designation

- ① **Insertion rail**
  - Insertion rails in blank/black anodized for frame heights
  - Tension-free mounting
- ② **Edge stop**
  - color-coordinated with the insertion rail
  - prevents modules from slipping out
- ③ **Socket insertion rail**
  - connection to the masonry in blank and black
  - for fixing insertion rail
- ④ **Cross-rail connector**
  - safe connection due to force and form closure
  - completely pre-assembled
- ⑤ **Slip guard**
  - protecting the modules against slipping
  - for fixing perforated sheet



Connecting insertion rails



Socket set, optional in blank and black

Video



Bauart geprüft  
Regelmäßige  
Produktions-  
überwachung  
www.dib.de  
ID: 11112360

novotegra GmbH  
Eisenbahnstraße 150 | 72072 Tübingen | Deutschland  
Tel. +49 7071 98987-0, info@novotegra.com  
www.novotegra.com

Subject to changes and errors expepted.  
Last updated: July 2021 / TP